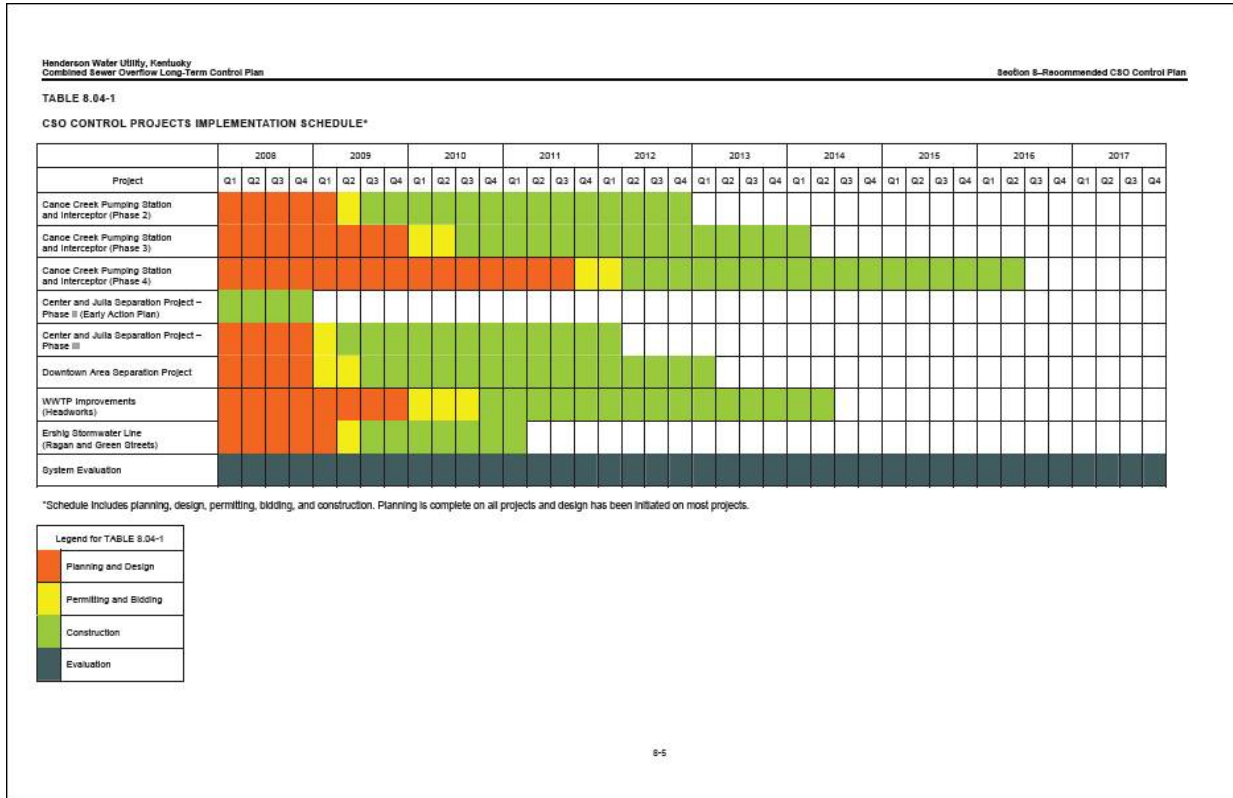


## Henderson Water Utility – Questions on RFQ Content

**The Construction Schedule for the North WWTP Headworks Project** - from the Interim Long Term Control Plan:



Since design has not begun on this project, the timeline will need to be compressed, with design beginning in Q4 2010, through Q2 2011, permitting and bidding in Q3 & Q4 2011, and construction in 2012 and 2013.

**For the Planning Study at the North WWTP**, HWU has very good records of Plant construction, dating back to 1954, through all iterations of the process train, and these plans will be made available to the selected consultant in scanned (pdf) format. Many of these documents are in AutoCAD format.

**Construction-Related Engineering Services** as called for in the North Plant RFQ will include Resident Engineer services. Resident Engineer experience should be addressed in the response.

**Consultant Teams for North Headworks Project:** Please feel free to name team members that may be used for both the planning study and Headworks design, but since the response is limited to 25 pages, detailed information on all team members is not required. HWU may request more detailed team member information after initial review of the responses. In discussion of past projects, please discuss previous teaming efforts and experience as appropriate.

## ***Henderson Water Utility – Questions on RFQ Content***

***MS4 Qualifications:*** Under the evaluation criteria for the MS4 Services, for Experience and Client References, disregard the requirements for cost estimates, costs of construction, etc, that are not relevant to these services. Provide information on experience and client references that are specific to MS4 consulting services. It may also be appropriate to list client contact information for specific stormwater projects, if that experience is relevant to the MS4 consulting services that HWU is requesting.